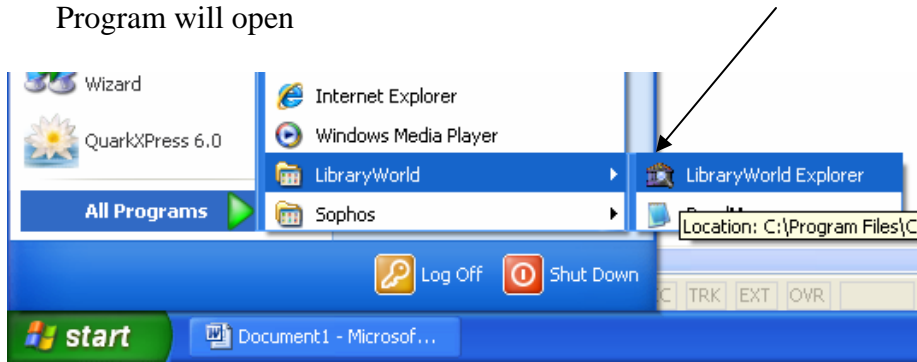
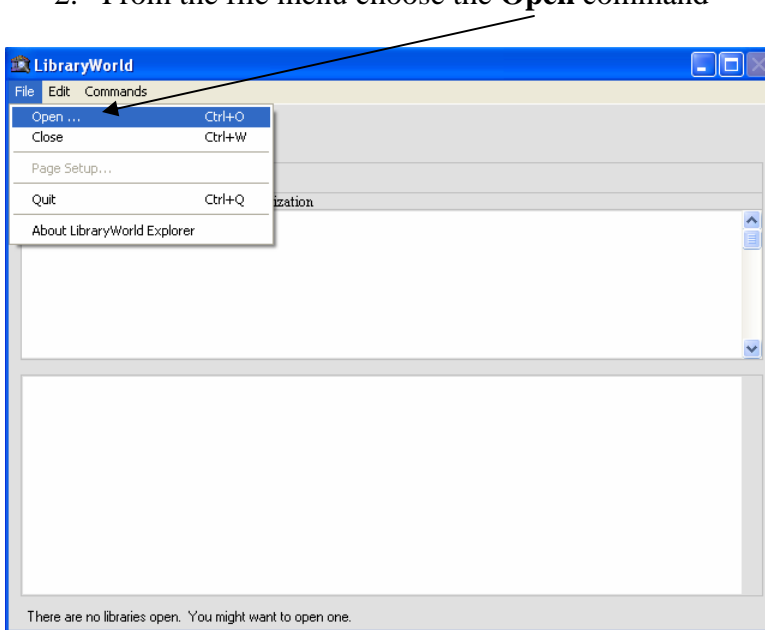


Library World Explorer Setup

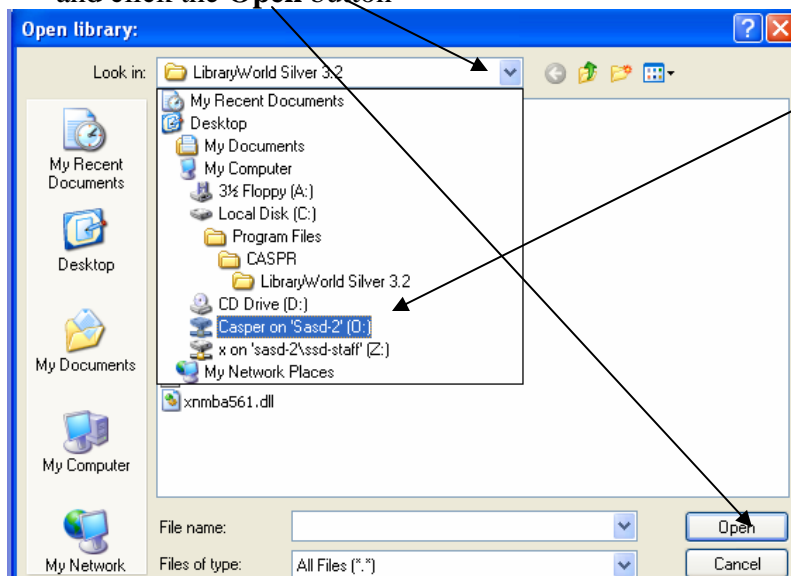
1. From the **Start Menu** go to all programs and open **Library World Explorer**. The Library World Program will open



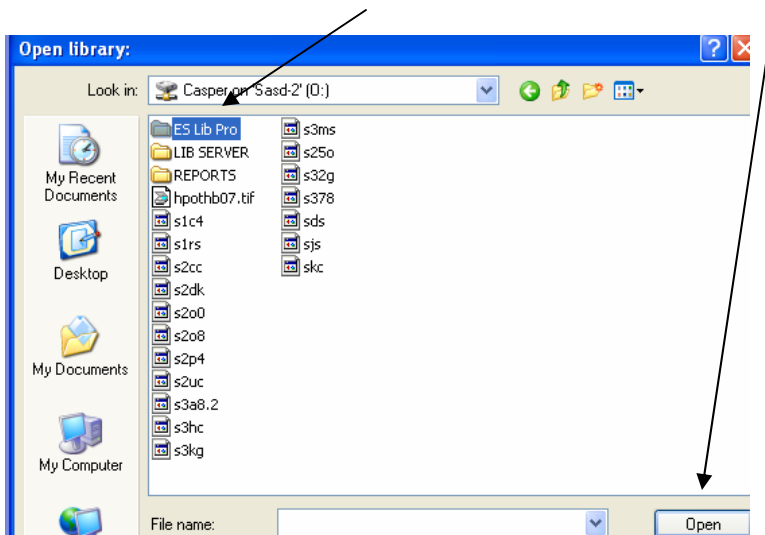
2. From the file menu choose the **Open** command



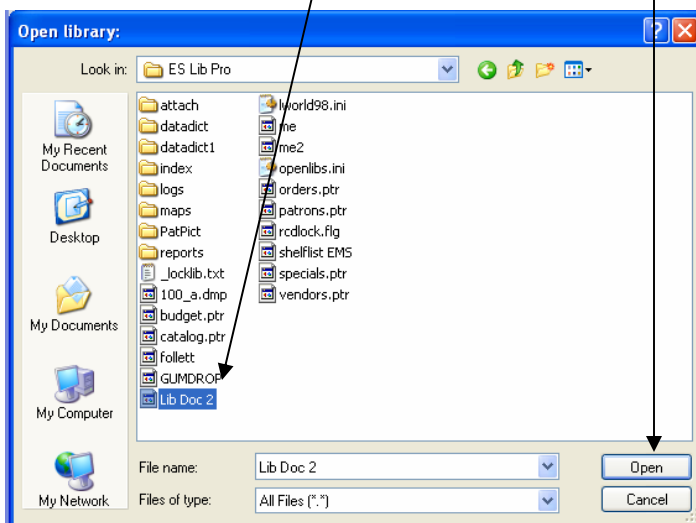
3. In the **Look In** box, click the drop down menu and choose the drive labeled **Casper on SASD-2 (O:)** and click the **Open** button



4. Next choose the **ES Lib Pro** folder and click the **Open** button



5. Now select the **Lib Doc2** file and click the **Open** button



6. The library work program will now be open and ready to use

